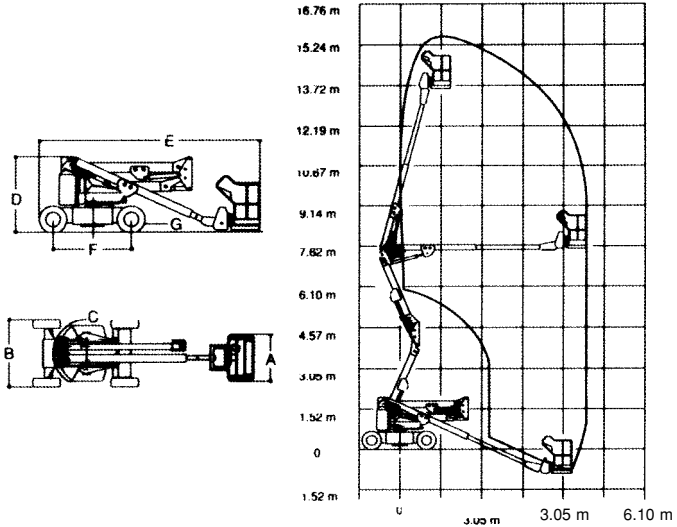


# KNUCKLE BOOMS - ELECTRIC

45 E



Working Height	.....	15.20m
Platform Height	.....	13.72m
Horizontal Outreach	.....	6.91m
Up & Over Clearance	.....	7.49m
Platform Capacity	.....	227kg
Rotating Platform Hydraulic	.....	.110
A Platform Dimensions	.....	.0.66m x 1.22m
B Overall Width	.....	1.75m
C Tailswing	.....	Zero
D Stowed Height	.....	2.00m
E Stowed Length	.....	5.69m
Gross Weight (Approx)	.....	5928kg